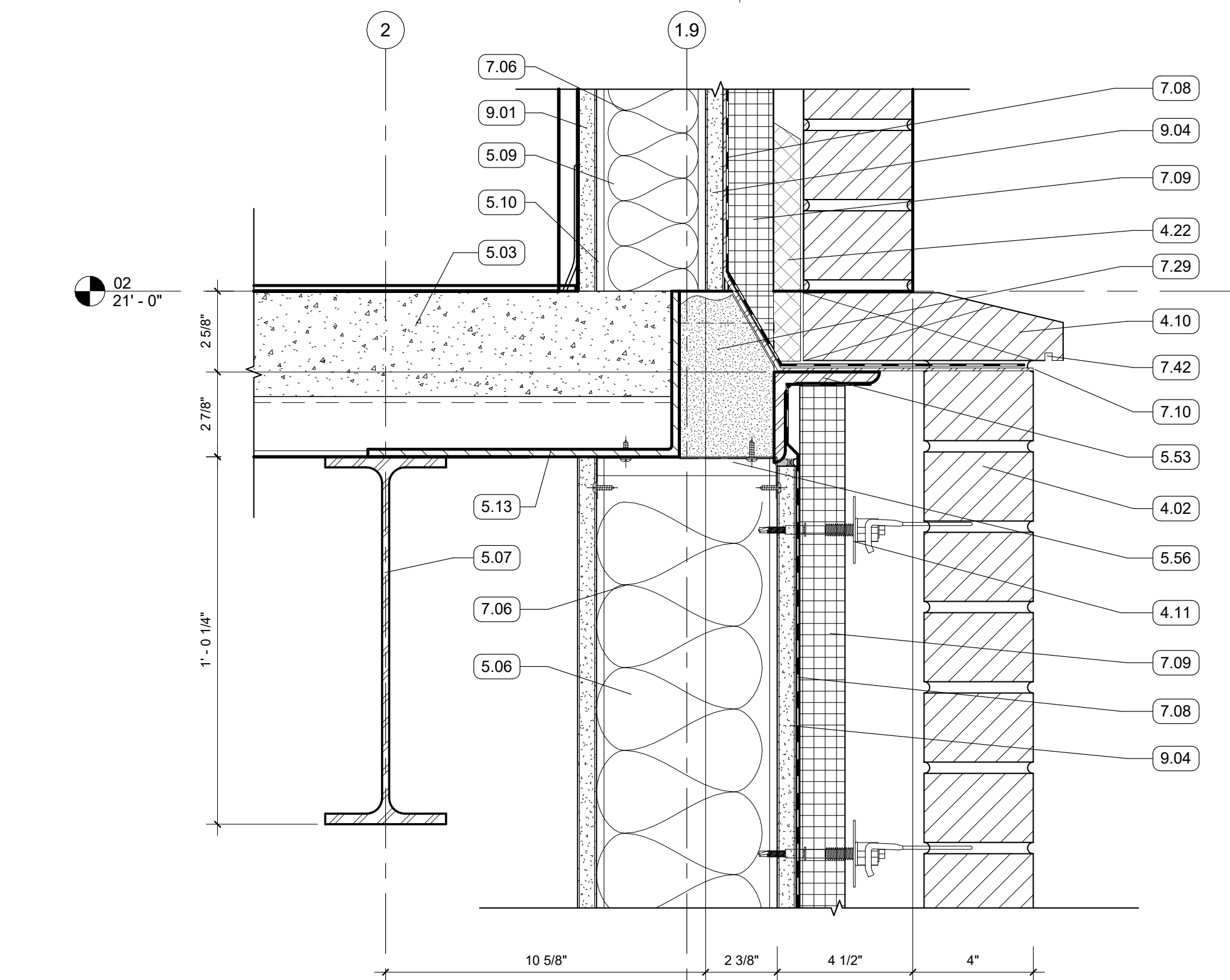
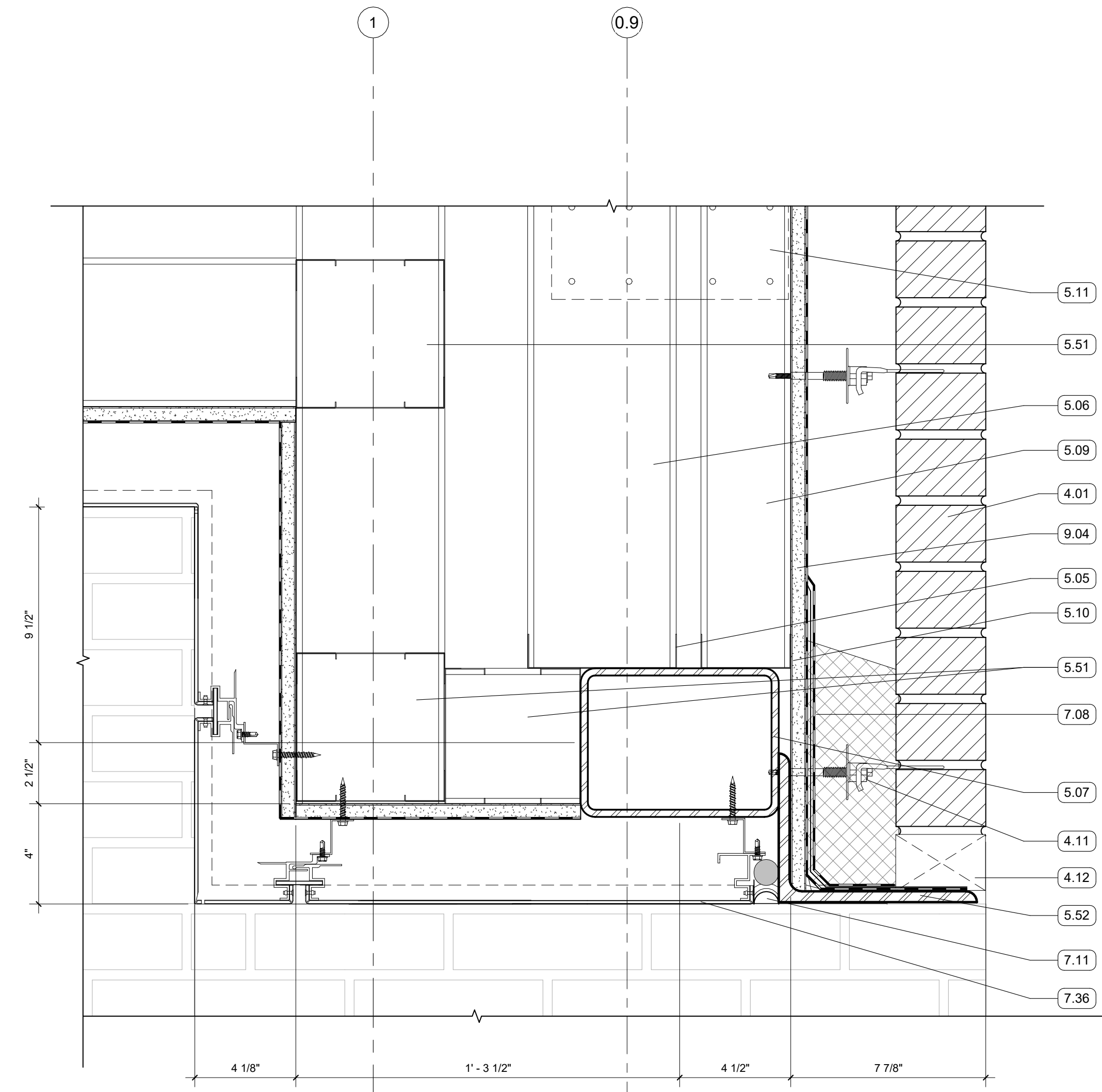


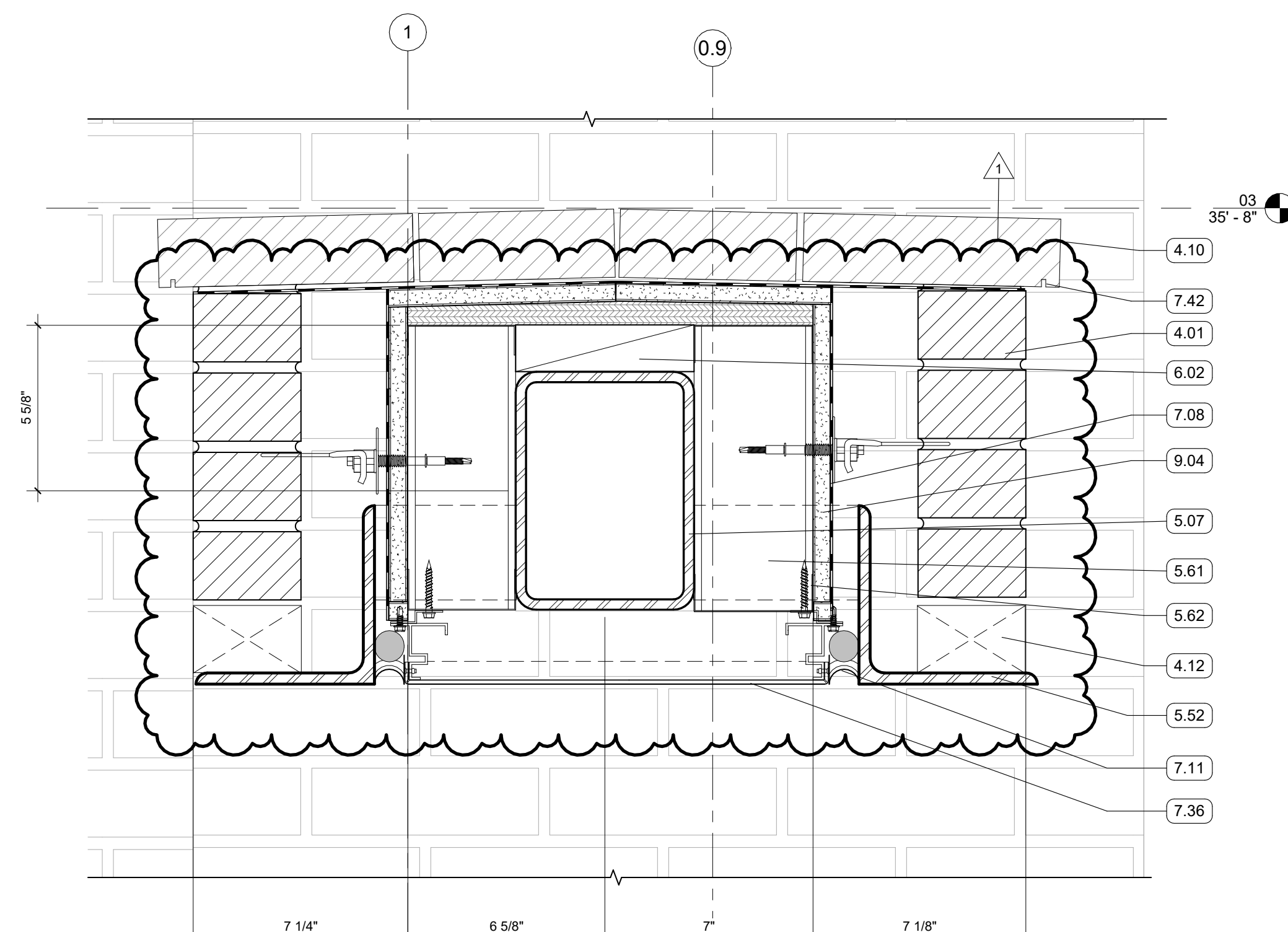
2 SECTION DETAIL - DOUBLE MASONRY
3" = 1'-0" | RE:2/A356



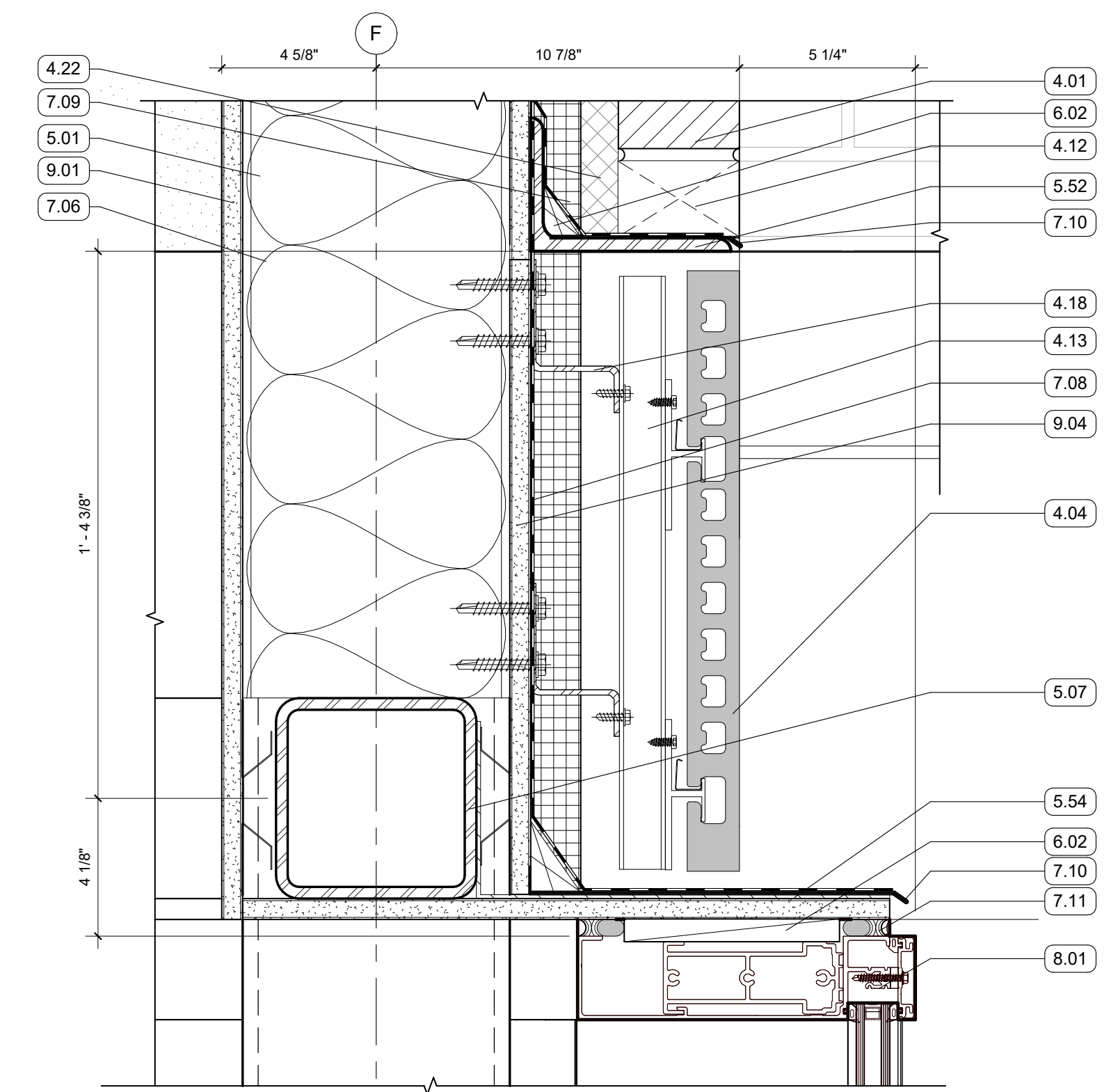
1 SECTION DETAIL
3" = 1'-0" | RE:2/A356



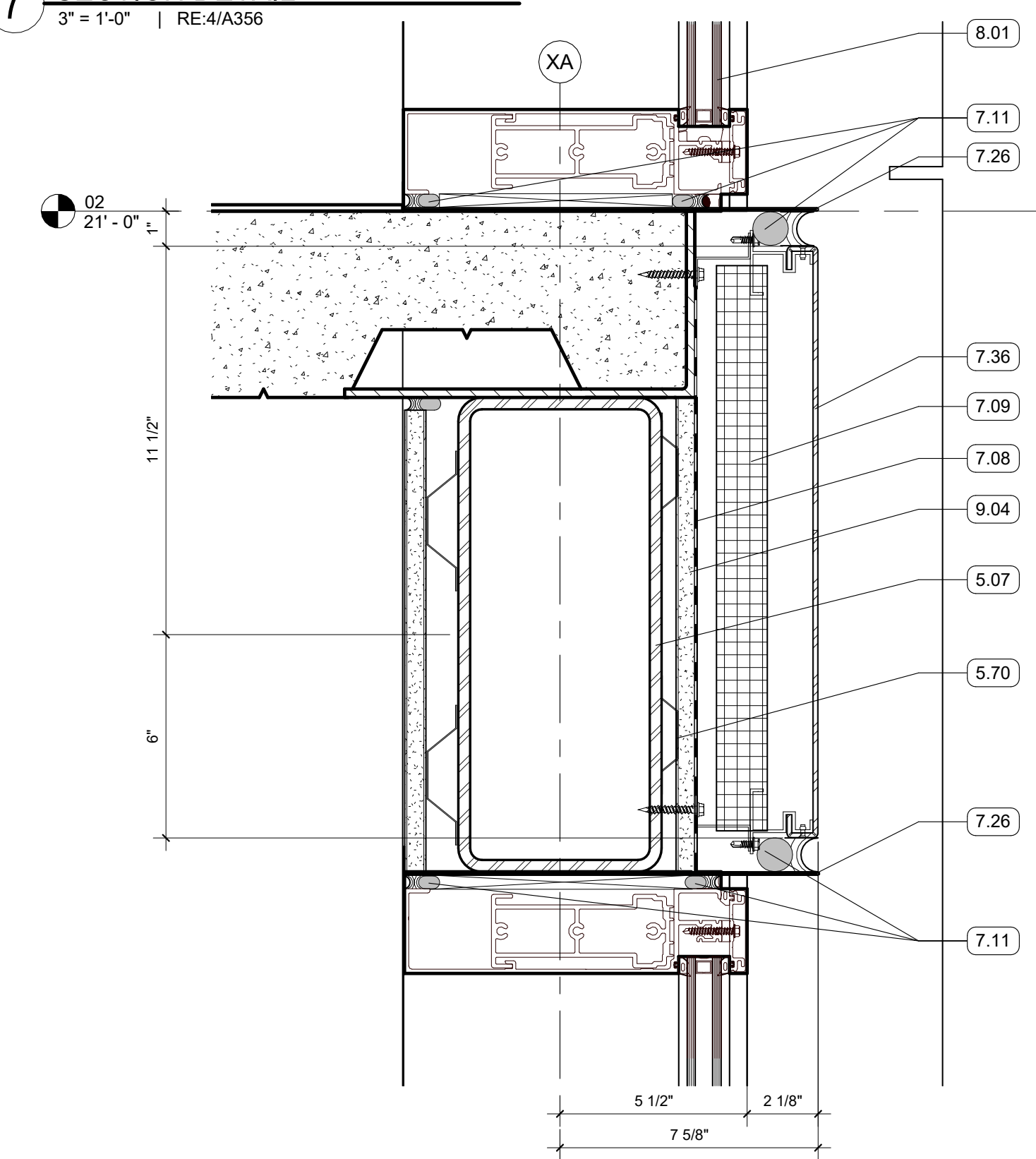
4 SECTION DETAIL - DOUBLE MASONRY LINTEL
3" = 1'-0" | RE:2/A356



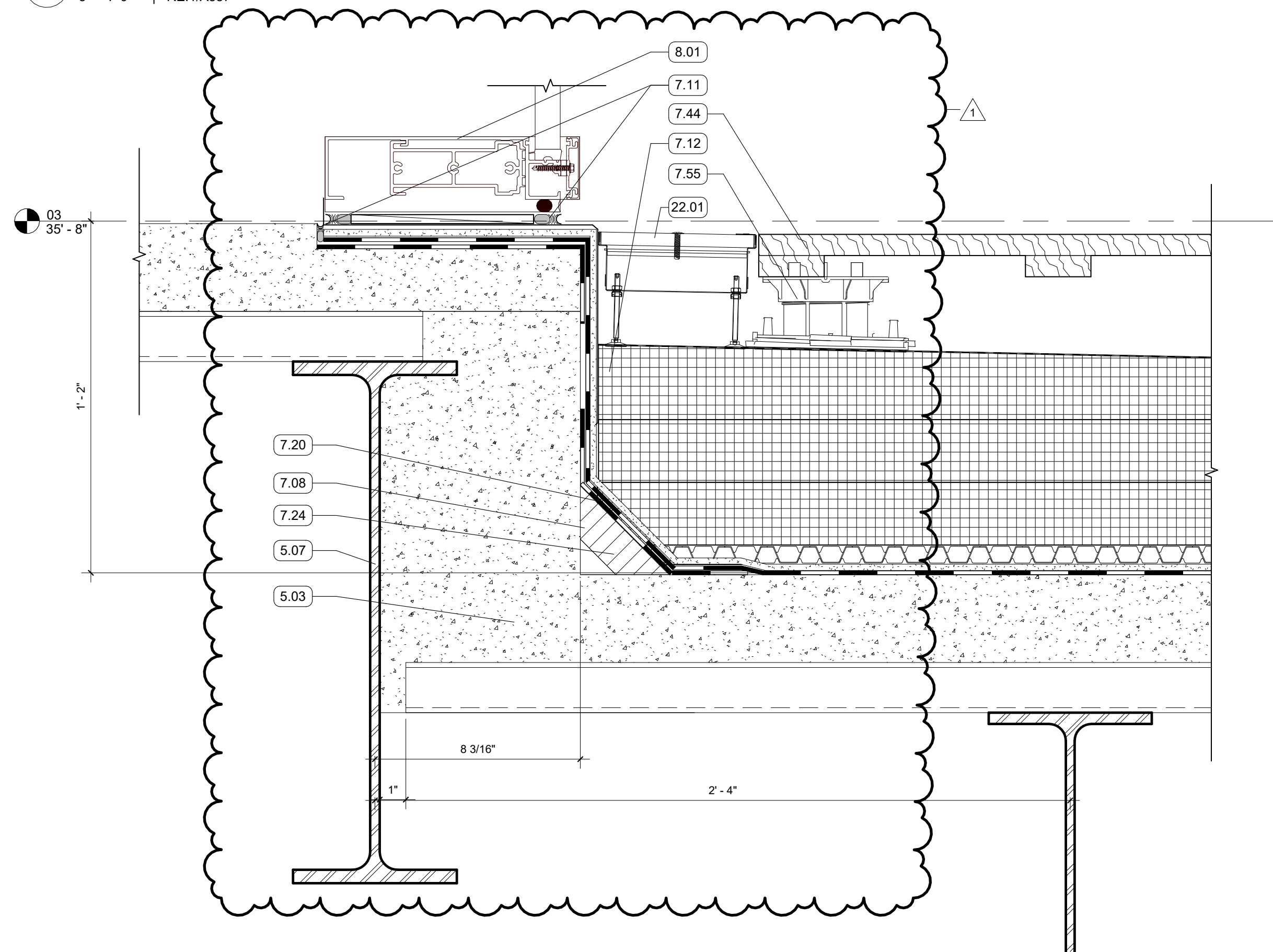
3 SECTION DETAIL
3" = 1'-0" | RE:2/A356



7 SECTION DETAIL
3" = 1'-0" | RE:4/A356



6 SECTION DETAIL - METAL HEAD AND SILL
3" = 1'-0" | RE:1/A357



5 SECTION DETAIL - 3RD FLOOR TERRACE
3" = 1'-0" | RE:3/A356

GENERAL NOTES

- ALL EXPOSED STRUCTURAL FRAMING & DECKING TO BE PAINTED

KEYNOTES

- FACE BRICK VENEER, RUNNING BOND
- 4" RECESSED BRICK COURSE, RUNNING BOND, RECESS HORIZONTAL BANDS AN ADDITIONAL 1/2"
- TERRA COTTA RAINSCREEN - STACK BOND, UNIT SIZE #1
- FACE BRICK, SPECIAL SHAPE SILL
- MASONRY ANCHORS
- WEEP VENTS AT 24" O.C. MIN
- NON-CONTINUOUS ALUMINUM SUBSTRUCTURE
- CONTINUOUS ALUMINUM SUBSTRUCTURE
- MORTAR NET
- BONDED CORNER
- 8" METAL STUD FRAMING
- 8" METAL STUD TRACK
- 5 1/2" COMPOSITE MTL DECK AND CONCRETE SLAB
- 6" METAL TRACK
- 6" METAL STUD FRAMING
- STRUCTURAL STEEL FRAMING
- 3 5/8" METAL STUD FRAMING
- 3 5/8" METAL TRACK
- BRIDGE STUD AS REQ'D
- EDGE ANGLE
- BOX BEAM
- GALVANIZED LOOSE LINTEL - PAINT TO MATCH BRICK WHERE EXPOSED
- SHELF ANGLE - RE: STRUCTURAL
- BRAKE METAL TRIM
- DEFLECTION TRACK
- 4" MTL STUD FRAMING - SEE STRUCTURAL
- 4" MTL TRACK
- 1/2" HAT CHANNEL
- WOOD BLOCKING
- BATT INSULATION, SIZED TO MATCH STUD DEPTH
- PROTECTION COURSE
- MINERAL FIBER BOARD INSULATION
- THRU-WALL FLASHING, SLOPED TO DRAIN
- BACKER ROD AND SEALANT
- 2 1/2" POLYISO INSULATION
- 1/4" COVERBOARD
- ROOF DRAINAGE MAT
- FORMED ALUMINUM SILL
- SPRAYED FOAM INSULATION
- MCM PANEL
- D RIP EDGE
- WOOD PAVER TILES; SEE LANDSCAPE FOR TILE LAYOUT PATTERN
- ADJUSTABLE PEDESTALS
- ALUM STOREFRONT, CURTAINWALL, OR WINDOW SYSTEM. SEE OPENING SCHEDULE
- 5/8" GYPSUM BOARD; SEE FINISH PLAN FOR FINISH MATERIAL
- 5/8" EXTERIOR SHEATHING
- TRENCH DRAIN - CONNECT TO PLUMBING